

P:\PROJECTS\OPEN PROJECTS\2022\2022-02 - WATTS POND - 197 PINEHURST01 - STRIP MALL\197A STRIPMALL - A2.00 - GROUND FLOOR PLAN.DWG
12/5/2022 1:35 PM

RF-1 **RF-1 ROOF ASSEMBLY: TPO ROOF**
TPO ROOF MEMBRANE

- 60 MIL TPO ROOF MEMBRANE, MECHANICALLY FASTENED ROOF MEMBRANE; COLOUR, WHITE
- R-35ci RIGID INSULATION Min. 2% TO DRAIN (Typ.)
- 6 MIL POLY VAPOUR RETARDER WITH 6" SEALED LAPS
- 1 1/2" DEEP, 22 GAUGE STEEL ROOF DECK (ZF75)

RF-2 **RF-3 ROOF ASSEMBLY: SERVICE ROOM ROOF**
TPO ROOF MEMBRANE

- 60 MIL TPO ROOF MEMBRANE, MECHANICALLY FASTENED ROOF MEMBRANE; COLOUR, WHITE
- R-35ci RIGID INSULATION Min. 2% TO DRAIN (Typ.)
- 6 MIL POLY VAPOUR RETARDER WITH SEALED LAPS
- 1 1/2" DEEP, 22 GAUGE STEEL ROOF DECK (ZF75)
- 12" BAILEY METAL TRUSS SYSTEM

FL-1 **C.I.P. CONCRETE FLOOR SLAB**
CONCRETE FLOOR SLAB

- 6" C.I.P. CONCRETE FLOOR SLAB REINFORCED W/ FIBREESH
- 6 mil. POLY VAPOUR BARRIER (PERMINATOR)
- 48" PERIMETER RIGID INSULATION (R-15)
- 6" MELL COMPACTED GRANULAR 'A'
- UNDISTURBED SOIL OR ENGINEERED FILL - SEE STRUCTURAL

SAW CUTS NOT TO EXCEED 12'-0"

EW1 **WALL: EXTERIOR WALL**
EXTERIOR PERIMETER BASE MASONRY VENEER

- 3 1/2" SHOULDICE STONE (SEE ELEVATION FOR TYPE) C/W GALV. METAL TIES AS PER O.B.C.
- 1" AIR SPACE
- Min. 2" SPRAY FOAM INSULATION (MIN. R-15ci PER CODE)
- 1/2" DENSGLASS GOLD EXTERIOR SHEATHING
- 6" STEEL STUDS @ 16" O.C. (18 GA. MIN) (SEE STRUCT.) c/w CONT. GASKET @ FLOOR
- 6" R-20 BATT INSULATION
- 6 MIL POLY VAPOUR BARRIER
- 1/2" GYPSUM BOARD (TAPED, SANDED # 1 COAT PRIMER)

EW1F - REFER TO EXTERIOR WALL NOTES TO ACHIEVE FIRE RATING

EW2 **WALL: EXTERIOR WALL**
MASONRY VENEER WALL

- 3 1/2" BRICK (SEE ELEVATION FOR TYPE) C/W GALV. METAL TIES AS PER O.B.C.
- 1" AIR SPACE
- Min. 2" SPRAY FOAM INSULATION (MIN. R15ci PER CODE)
- 1/2" DENSGLASS GOLD EXTERIOR SHEATHING
- 6" STEEL STUDS @ 16" O.C. (18 GA. MIN) (SEE STRUCT.) C/W CONT. GASKET @ FLOOR
- 6" R-20 BATT INSULATION
- 6 MIL POLY VAPOUR BARRIER
- 1/2" GYPSUM BOARD (TAPED, SANDED # 1 COAT PRIMER)

EW2F - REFER TO EXTERIOR WALL NOTES TO ACHIEVE FIRE RATING

EW3 **WALL: EXTERIOR WALL**
RAIN SCREEN & EIFS WALL

- DRYVIT DUAL BARRIER MOISTURE DRAIN EIFS SYSTEM, CLASS PB (INSTALLED AS PER MANUFACTURERS SPECIFICATIONS)
- R-15ci PER CODE (REFER TO SECTIONS FOR CHANGES IN THICKNESS @ DECORATIVE ELEMENTS)
- DRYVIT BACKSTOP NT-TEXTURE AIR BARRIER APPLIED OVER ENTIRE SUBSTRATE SURFACE OR EQUIVALENT.
- 1/2" DENSGLASS GOLD EXTERIOR SHEATHING TAPED @ JOINTS w/ DRYVIT BACKSTOP NT OVER GRID TAPE
- 6" STEEL STUDS @ 16" o.c. (25 GA. MIN) (SEE STRUCT.) c/w CONT GASKET @ FLOOR
- 6" R-20 BATT INSULATION
- 6 MIL POLY VAPOUR BARRIER
- 1/2" GYPSUM BOARD (TAPED, SANDED # 1 COAT PRIMER)

GC SHALL ENSURE CONFORMANCE TO DRYVIT OUTSULATION MD SYSTEM SPECIFICATIONS AND DETAILS BY DRYVIT QUALIFIED INSTALLER

EW4 **WALL: EXTERIOR WALL (120 MIN FIRE RATED)**
C.M.U WALL

- 3 1/2" BRICK (SEE ELEVATION FOR TYPE) C/W GALV. METAL TIES AS PER O.B.C.
- 1" AIR SPACE
- Min. 3" SPRAY FOAM INSULATION (MIN. R-19 CI PER CODE)
- 8" LIGHT WEIGHT C.M.U
- 2'-15M VERT. @ 48" O/C
- 2'-15M EACH SIDE OF OPENINGS & CORNERS
- HORZ. REINFORCING EVERY 2ND COURSE
- TOP COURSE FILLED SOLID W/ GROUT
- 2ND TOP COURSE CONTINUOUS BOND BEAM C/W
- 2'-15M CONTINUOUS HORZ. REINFORCING

P25 **WALL: INTERIOR DEMISING WALL**

- 1/2" GYPSUM BOARD (TAPED, SANDED # 1 COAT PRIMER)
- 6" STEEL STUDS @ 24" O.C. (18 GA. MIN) FROM STRUCTURE TO STRUCTURE

CUT GYPSUM BOARD TO SUIT DECK FLUTES DIRECTION w/ MAX 3" GAP - CONTINUOUS FIRE CAULK BEAD AT DECK & BOTTOM OF WALL, BOTH SIDES, TYP.

EW5 **WALL: EXTERIOR WALL (120 MIN. FIRE RATED)**
RAIN SCREEN & EIFS WALL ULC-U411 E4

- STO THERM CI MINERAL SYSTEM Min. R-15ci OR EQUIVALENT
- 2 @ 1/2" DENSGLASS GOLD EXTERIOR SHEATHING TAPED @ JOINTS w/ DRYVIT BACKSTOP NT OVER GRID TAPE
- 6" STEEL STUDS @ 16" o.c. (25 GA. MIN) (SEE STRUCT.) c/w CONT. GASKET @ FLOOR
- 6" Min. R-20 BATT INSULATION
- 6 MIL POLY VAPOUR BARRIER
- 2 @ 1/2" TYPE X GYPSUM BOARD (TAPED, SANDED # 1 COAT PRIMER)

GC SHALL ENSURE STO THERM CI MINERAL SYSTEM IS INSTALLED AS PER MANUFACTURERS SPEC AND BY QUALIFIED INSTALLER.

EXTERIOR WALL NOTES:

- F = DENOTES THE FOLLOWING UPGRADE TO EXTERIOR SHEATHING AND INTERIOR DRYWALL TO ACHIEVE 2 HR FIRE RATING **ULC. U453 EQ.**
 - 2 @ 1/2" DENSGLASS GOLD EXTERIOR SHEATHING TAPED @ JOINTS w/ DRYVIT BACKSTOP NT OVER GRID TAPE
 - 2 @ 1/2" TYPE X GYPSUM BOARD (TAPED, SANDED # 1 COAT PRIMER)
- ALL EXTERIOR METAL COLUMNS TO BE FILLED WITH SPRAY FOAM INSULATION (Typ.)
- MINERAL WOOL INSULATION BOARD TO BE USED IN LIEU OF RIGID INSULATION (IE. EIFS FACADE & PARAPET CORNICE) AT ALL 120 Min. FIRE RATED LOCATIONS (REAR WALL).

ROOF ASSEMBLIES

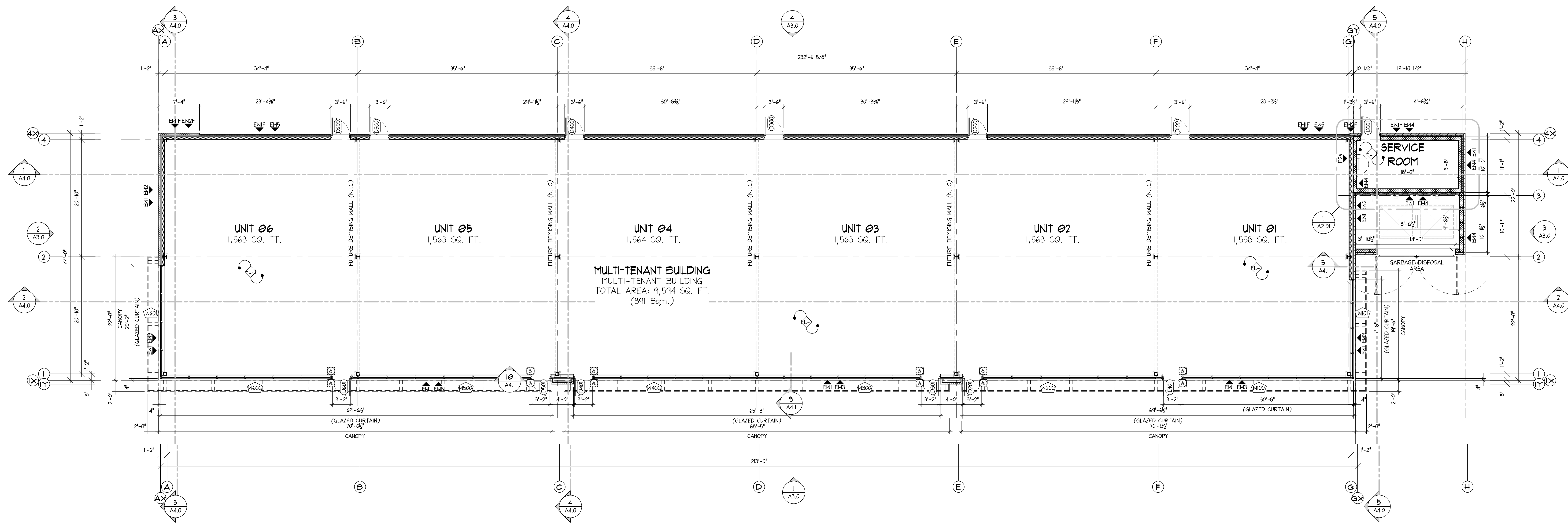
4
A2.0

FLOOR ASSEMBLIES

3
A2.0

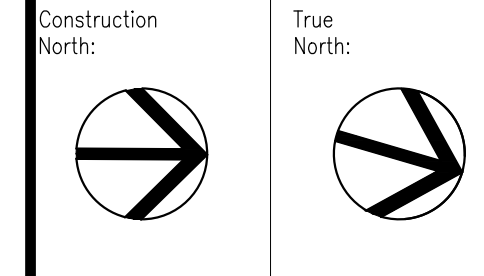
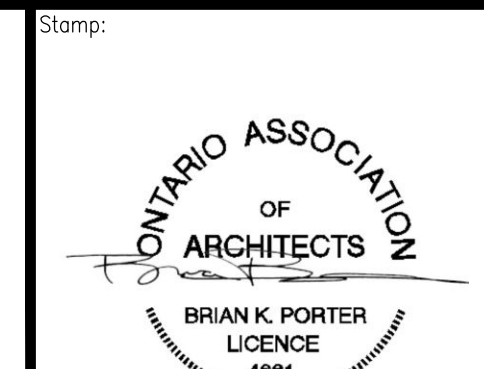
WALL ASSEMBLIES

2
A2.0



GROUND FLOOR PLAN

1
A2.0

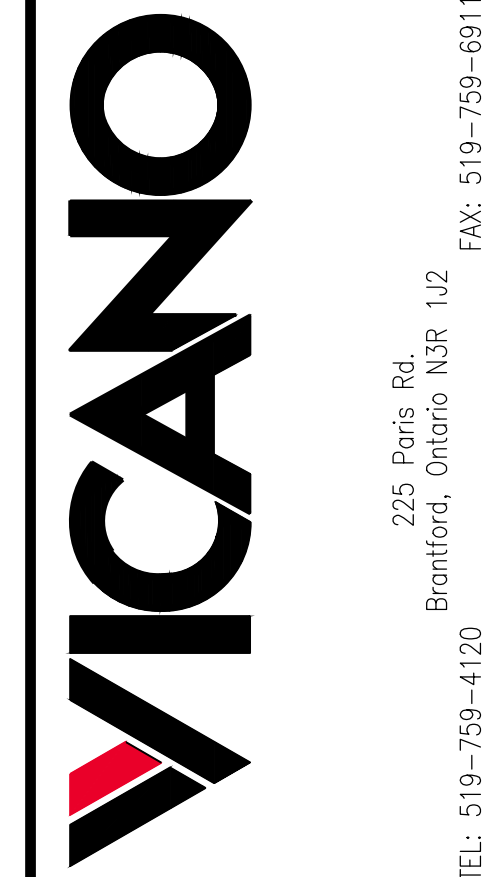


1. THIS DRAWING IS OWNED BY OR LICENSED FOR USE BY VICANO CONSTRUCTION LIMITED AND MAY NOT BE REPRODUCED, DISSEMINATED, PUBLISHED OR TRANSFERRED IN ANY FORM OR BY ANY MEANS, EXCEPT WITH THE PRIOR WRITTEN CONSENT OF VICANO CONSTRUCTION LIMITED

2. NO CONSTRUCTION TO BEGUN UNTIL APPROVED PERMIT IS IN HAND FROM THE CITY, AND REVIEWED BY THE ARCHITECT FOR APPLICABLE COMMENTS

NO.	DATE	DESCRIPTION	REVISIONS
1	15 MAY 2022	ISSUED FOR INITIAL PRICING	
2	26 JUL 2022	ISSUED FOR FOUNDATION PERMIT	
3	06 AUG 2022	ISSUED FOR SERVICES DESIGN (ANTECA)	
4	05 DEC 2022	ISSUED FOR PERMIT	
5			
6			
7			
8			

PHASE: PERMIT
OPTION/RELEASE: 1.04



Project Title: SHELL BUILDING 'A' WATTS POND
197 PINEHURST RD
PARIS, ONTARIO
Job No: --
Scale: --
Designed By: --
Drawn By: SPD
Dwg. no: A2.0