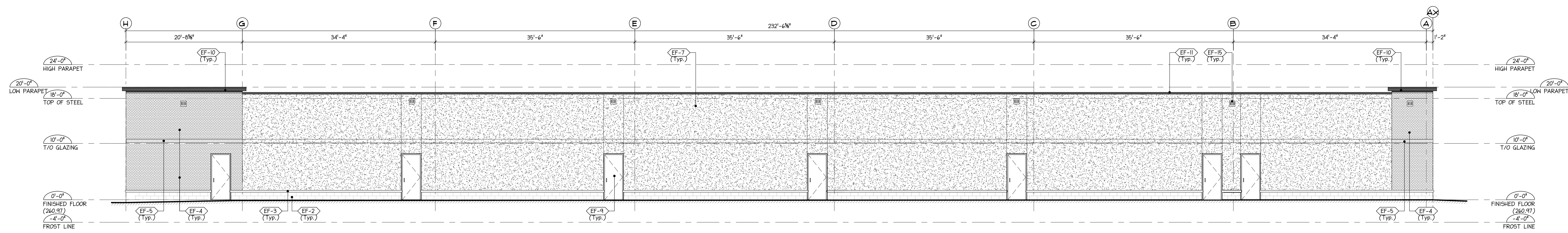
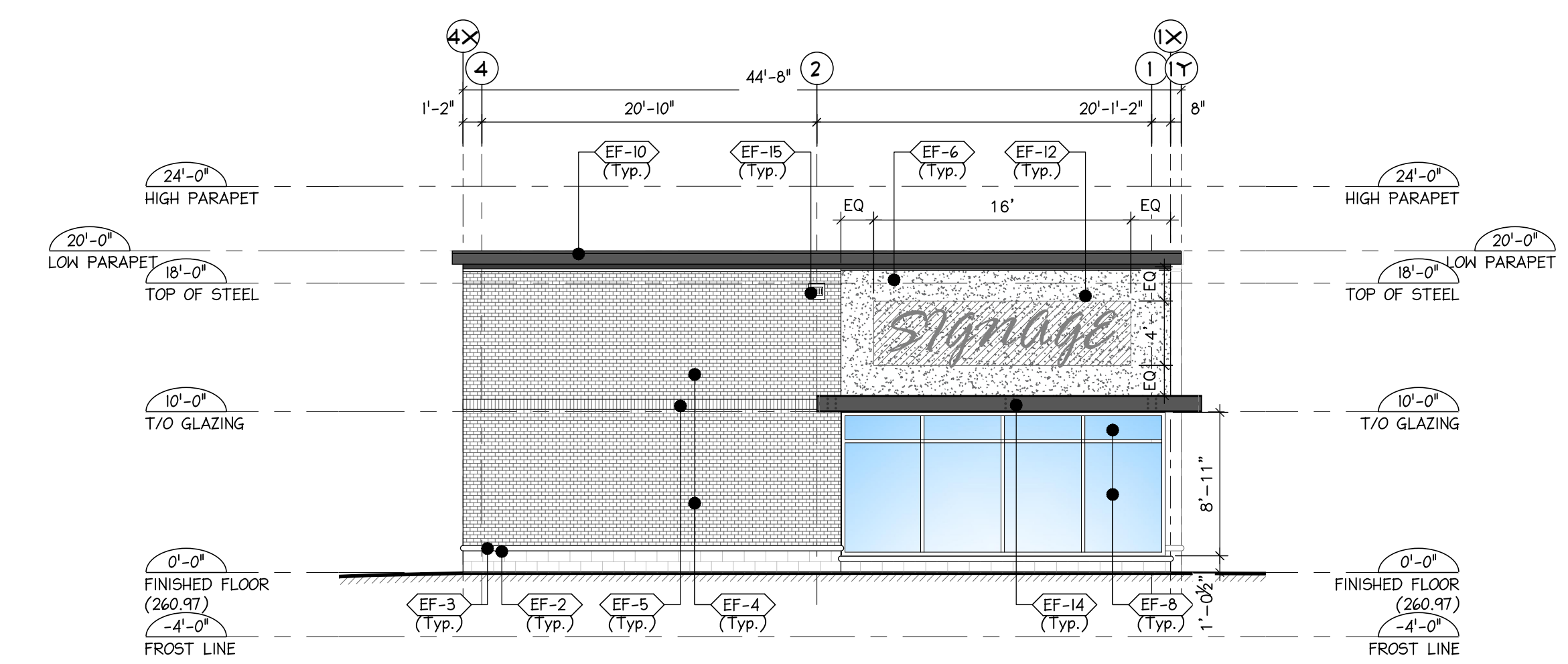


EF-1 CONCRETE FOUNDATION CAST-IN-PLACE CONCRETE FOUNDATION	EF-5 CLAY BRICK (SOLDIER COURSE): MFG. MERIDIAN BRICK COLOUR: CONESTOGA SERIES FINISH: MAX SIZE	EF-9 H.M. DOORS & FRAMES 7'-0" HIGH PREFINISHED HOLLOW METAL DOORS AND FRAMES COLOUR: T.B.D.	EF-13 N/A
EF-2 SHOULDRICE STONE BASE MFG. SHOULDRICE STONE COLOUR: DESERT BUFF FINISH: TAPESTRY FINISH	EF-6 EXTERIOR INSULATED FINISH SYSTEM (E.I.F.S.): ACRYLIC EIFS SYSTEM EXTERIOR FINISH COLOUR: BENJAMIN MOORE #1594 - SHAKER GREY FINISH: T.B.D.	EF-10 E.I.F.S PARAPET SYSTEM EIFS SYSTEM PARAPET PROFILES INDICATED ON DRAWINGS COLOUR: CHARCOAL GREY	EF-14 METAL CANOPY PAINTED METAL FRAME OPEN CANOPY COLOUR: CHARCOAL GREY
EF-3 PRECAST STONE SILL: MFG. SHOULDRICE STONE COLOUR: DESERT BUFF FINISH: TAPESTRY FINISH	EF-7 EXTERIOR INSULATED FINISH SYSTEM (E.I.F.S.) (2 Hr RATED): ACRYLIC EIFS SYSTEM EXTERIOR FINISH COLOUR: BENJAMIN MOORE #1594 - SHAKER GREY FINISH: T.B.D.	EF-11 PREFINISHED CAP FLASHING PRE-FINISHED 26GA. METAL CAP FLASHING COLOUR: CHARCOAL GREY	EF-15 LIGHT FIXTURE LIGHT FIXTURE DECORATIVE LIGHT FIXTURE MFG: T.B.D.
EF-4 LIGHT CLAY BRICK: MFG. MERIDIAN BRICK COLOUR: CONESTOGA SERIES FINISH: MAX SIZE	EF-8 GLAZED WINDOWS & DOORS (VISION GLAZING) 8'-0" HIGH THERMALLY BROKEN ALUMINUM FRAMES C/W ARGON FILLED SEALED LON E, SOLARBAN 60 CLEAR GLAZING OR APPROVED EQUAL COLOUR: BLACK ANODIZED	EF-12 SIGNAGE POSSIBLE TENANT SIGNAGE C/W 2 @ 48"X6" - 3' EXTERIOR GRADE PLYWOOD BACKING AS REQ'D	EF-16 GARBAGE ENCLOSURE FENCING P.T. WOOD CLAD GARBAGE ENCLOSURE FENCE

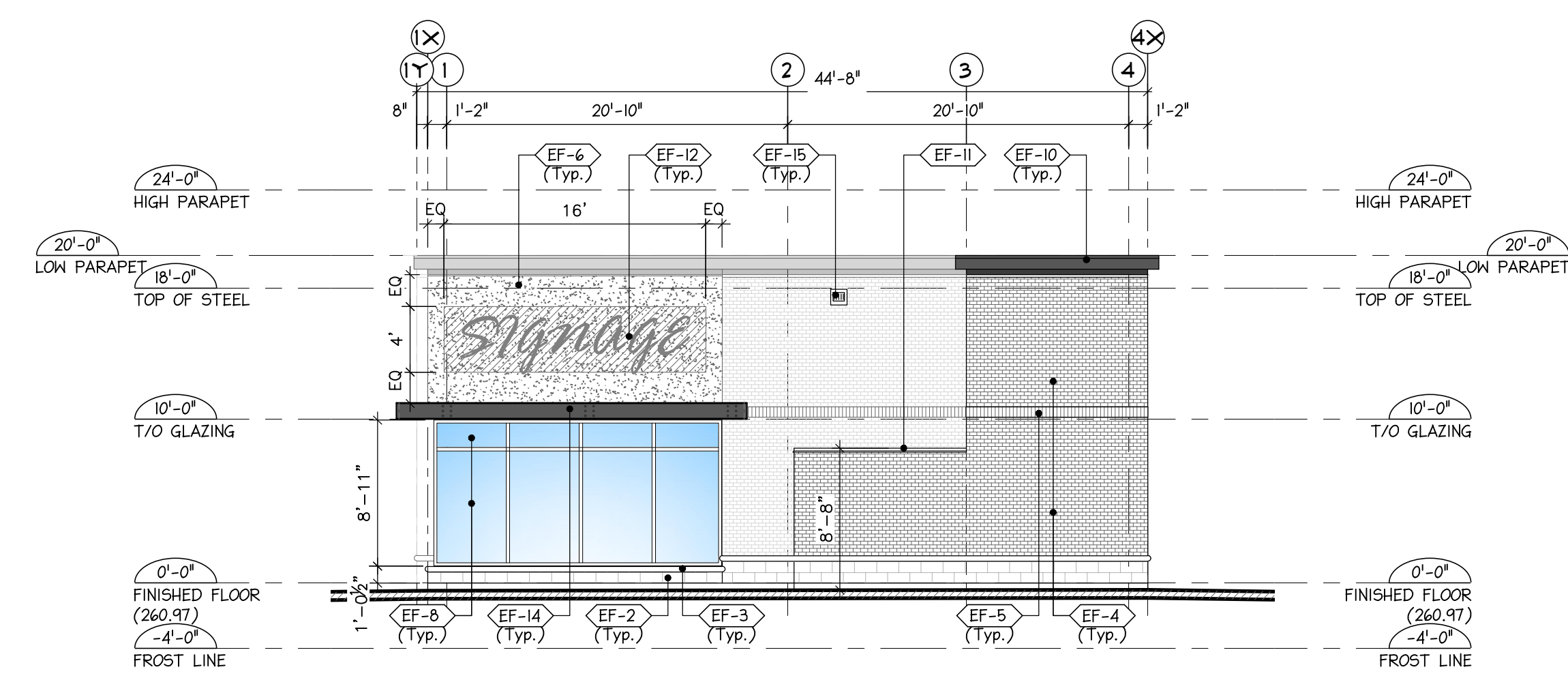
EXTERIOR WALL FINISHES 5
A3.0



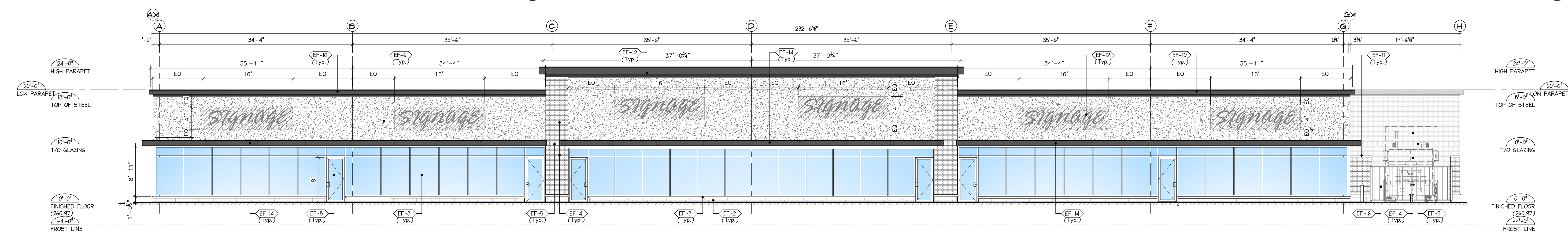
REAR ELEVATION 4
1/8" = 1'-0" A3.0



LEFT ELEVATION 2
1/8" = 1'-0" A3.0



RIGHT ELEVATION 3
1/8" = 1'-0" A3.0



FRONT ELEVATION 1
1/8" = 1'-0" A3.0

1. THIS DRAWING IS OWNED BY OR LICENSED FOR USE BY VICANO CONSTRUCTION LIMITED AND MAY NOT BE REPRODUCED, DISSEMINATED, PUBLISHED OR TRANSFERRED IN ANY FORM OR BY ANY MEANS, EXCEPT WITH THE PRIOR WRITTEN CONSENT OF VICANO CONSTRUCTION LIMITED.

2. NO CONSTRUCTION TO BEGIN UNTIL APPROVED PERMIT IS IN HAND FROM THE CITY, AND REVIEWED BY THE ARCHITECT FOR APPLICABLE COMMENTS.

NO.	DATE	DESCRIPTION	ISSUED FOR	PERMIT
1	5 MAY 2022	ISSUED FOR INITIAL PRICING		
2	26 JUL 2022	ISSUED FOR FOUNDATION PERMIT		
3	6 AUG 2022	ISSUED FOR SERVICES DESIGN (ART/CA)		
4	5 DEC 2022	ISSUED FOR PERMIT		
5				
6				
7				
8				

VICANO

225 Paris Rd.
 Brantford, Ontario N3R 1J2
 TEL: 519-759-4120 FAX: 519-759-6311

Project Title: SHELL BUILDING 'A' WATTS POND 197 PINEHURST RD ONTARIO

Scale: PARIS Job No: ---

Designed By: --- Drawn By: SPD

Dwg. no. **A3.0**