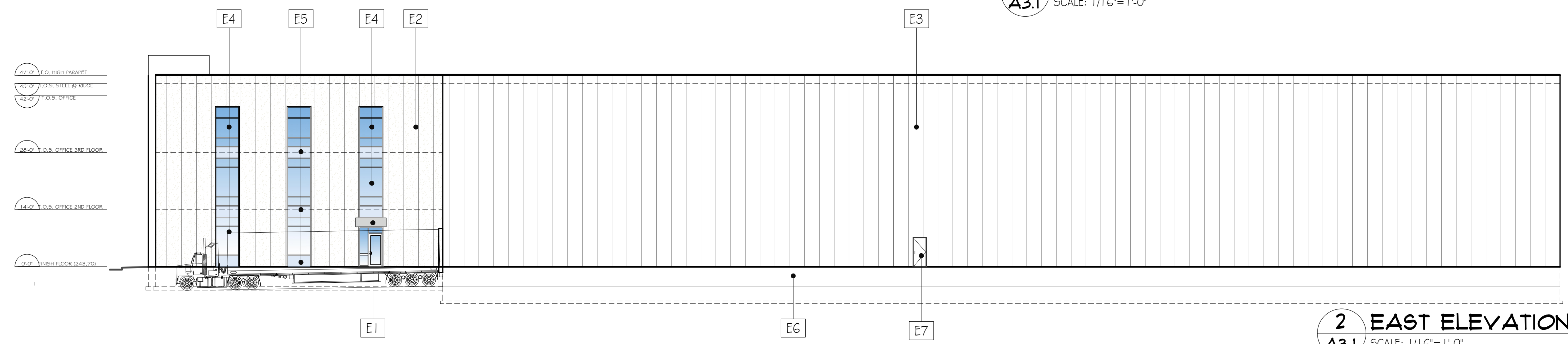
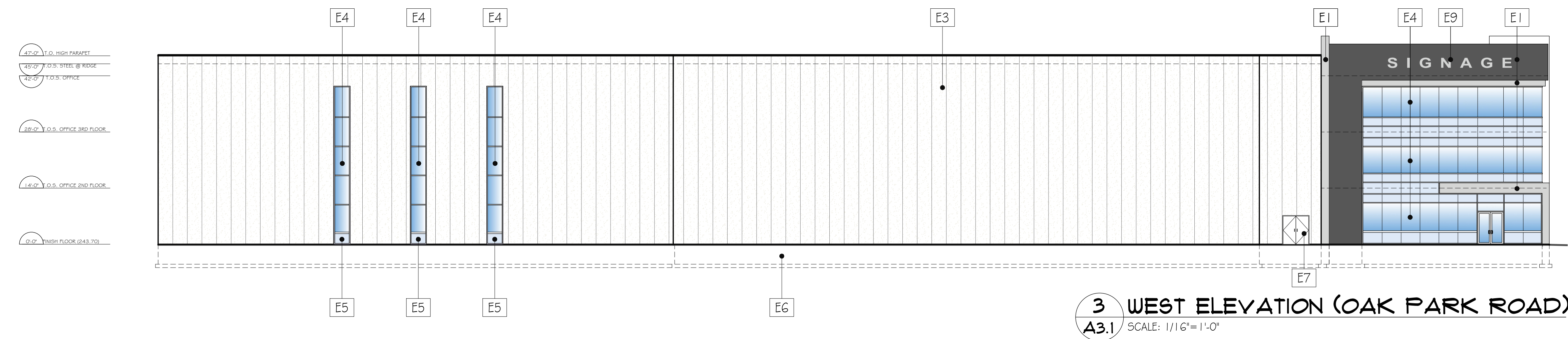


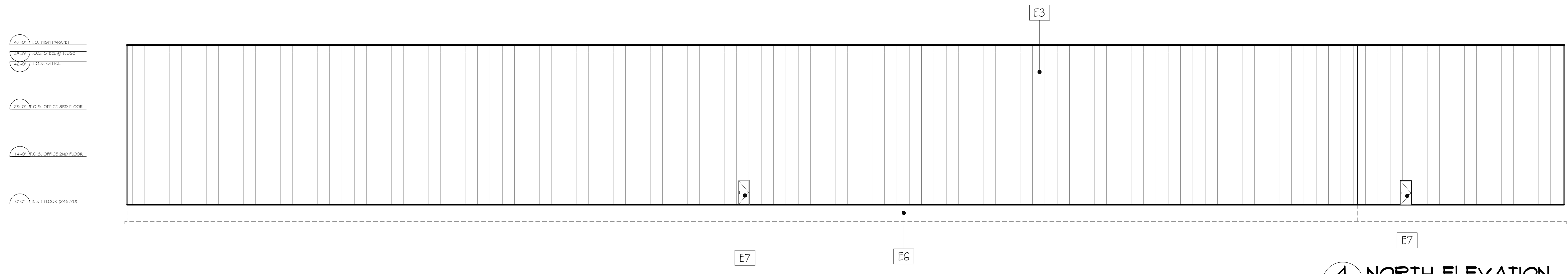
1 SOUTH ELEVATION (SAVANNAH OAKS DRIVE)
 A3.1 SCALE: 1/16"=1'-0"



2 EAST ELEVATION
 A3.1 SCALE: 1/16"=1'-0"



3 WEST ELEVATION (OAK PARK ROAD)
 A3.1 SCALE: 1/16"=1'-0"



4 NORTH ELEVATION
 A3.1 SCALE: 1/16"=1'-0"

- NOTES:**
- E1 ACM WALL PANEL - CHARCOAL & GREY
 - E2 STUCCO FINISHED INSULATED METAL WALL PANEL - WHITE
 - E3 REFINISHED INSULATED METAL WALL PANEL - WHITE
 - E4 GLAZED WINDOWS & DOORS (VISION GLAZING)
 - E5 GLAZED WINDOWS & DOORS (SPANDREL GLAZING)
 - E6 CONCRETE FOUNDATION
 - E7 PREFINISHED HOLLOW METAL DOORS AND FRAMES - WHITE
 - E8 PREFINISHED FOAM INSULATED LOADING DOCK DOORS - WHITE
 - E9 SIGNAGE

REVISION		
NO.	DESCRIPTION:	DATE:
1.		
2.		
3.		
4.		

Construction North:

Stamp:

WARNING:
 THIS DRAWING IS OWNED BY OR LICENSED FOR USE BY VICANO CONSTRUCTION LIMITED AND MAY NOT BE REPRODUCED, DISSEMINATED, PUBLISHED OR TRANSFERRED IN ANY FORM OR BY ANY MEANS, EXCEPT WITH THE PRIOR WRITTEN CONSENT OF VICANO CONSTRUCTION LIMITED

VICANO
 VICANO CONSTRUCTION LIMITED
 225 Paris Rd.
 Brantford, Ontario N3R 1J2
 TEL: 519-759-4120 FAX: 519-759-6911

PROPOSED INDUSTRIAL SHELL BASE BUILDING
 SAVANNAH OAKS DRIVE LOTS 5 & 6
 BRANTFORD, ONTARIO

ELEVATIONS

Design: PV
 Drawn: YY
 Date: MARCH 20, 2023
 Dwg. no. **A3.1**

Scale: AS NOTED