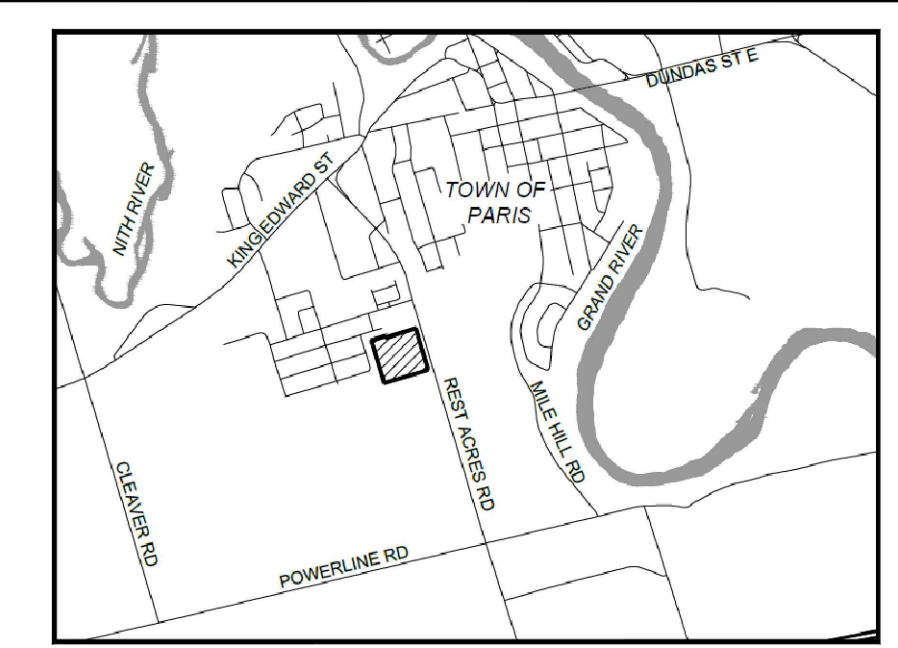


OVERALL AREA SUMMARY	
NAME	AREA (sq.ft.)
BUILDING A	
UNIT A1	1,610
UNIT A2	1,513
UNIT A3	1,507
UNIT A4	1,510
UNIT A5	1,520
UNIT A6	1,512
UNIT A7	1,505
UNIT A8	1,515
UNIT A9	1,353
UNIT A10	1,318
MECH. ROOM	182
BLG A TOTAL = 15,045	
BUILDING B	
UNIT B1	2,646
BLG B TOTAL = 2,646	
BUILDING C	
UNIT C1	2,202
UNIT C2	3,154
BLG C TOTAL = 5,356	
BUILDING D	
UNIT D1	1,727
UNIT D2	1,667
UNIT D3	3,322
UNIT D4	2,131
UNIT D5	1,304
MECH. ROOM	316
BLG D TOTAL = 10,467	
BUILDING E	
UNIT E1	7,978
UNIT E2	3,923
MECH. ROOM	147
BLG E TOTAL = 12,048	
BUILDING F	
UNIT F1	10,388
UNIT F2	8,327
UNIT F3	8,539
UNIT F4 & F5	19,073
UNIT F6	4,566
UNIT F7	17,212
MECH./STAIRWELLS	441
BLG F TOTAL = 68,546	
BUILDING G	
UNIT G1 & G2	2,986
UNIT G3	1,813
UNIT G4	1,120
UNIT G5	1,073
UNIT G6	1,843
UNIT G7	1,570
MECH. ROOM	248
BLG G TOTAL = 10,652	
BUILDING H	
UNIT H1, H2, & H3	1,160
BLG H TOTAL = 3,480	
SUM OF ALL BUILDINGS	128,210



KEY MAP
SCALE: NTS

Construction North:

Stamp:

VICANO

VICANO CONSTRUCTION LIMITED
225 Paris Rd.
Brantford, Ontario N3R 1J2
TEL: 519-759-4120 FAX: 519-759-6911

Project Title:
1070 REST ACRES ROAD
PARIS, ONTARIO

Sheet Title:
LEASED UNITS PLAN

Design: PV
Drawn: YY
Date: NOV. 11, 2020

Scale:
1:400

Dwg. no. SP1